



**SAPPHIRE EDGE+ VPR-4616 System** is powered by the AMD Embedded+ Architecture which combines an AMD Ryzen™ Embedded processor and an AMD Versal™ AI Edge adaptive SoC on a single integrated motherboard. The AMD Ryzen Embedded processor enables the AMD Versal FPGA with more bandwidth for deterministic and low latency adaptive processing tasks.

The EDGE+ VPR-4616-SYS accelerates the evaluation process by integrating the EDGE+ VPR-4616-MB motherboard with 2x 16GB DDR4 SODIMM's and 1TB M.2 SSD in a sleek chassis along with a power supply. IO boards can easily be installed to support a wide range of sensors for various development applications from sensor data to AI to real-time control, all while meeting critical safety and security requirements. As an adaptive compute acceleration platform, the EDGE+ VPR-4616-SYS allows developers to rapidly evolve their sensor fusion and AI algorithms while leveraging a scalable device portfolio for diverse performance and power profiles from edge to endpoint.

### Key Features:

- AMD Ryzen™ Embedded R2314 processor
- AMD Versal™ AI Edge VE2302 FPGA
- 32GB memory and 1TB storage
- Linux Ubuntu 22.04 OS
- Packaged in a sleek chassis with power supply
- 3 optional I / O Expansion Cards available





IPC with integrated Machine Vision Frame Grabber



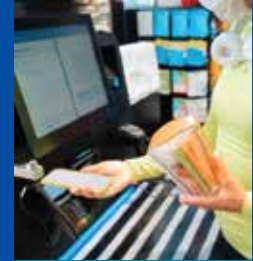
IPC with offloaded Industrial networking and control



Robot Controller with motion planning



Medical PC with connected probes



Smart City, Security, Retail

## Programmable IO: Optional IO Expansion

Optional plugin expansion boards are available to support a variety of sensor interfaces.



Dual 10/100/1000MB Industrial Ethernet Board



Octo GMSL2 Camera Board



Dual 10/25Gb Ethernet board with 16 GPIO

Model Name		SAPPHIRE EDGE+ VPR-4616-SYS
Processor IC		AMD Ryzen™ Embedded R2314
AMD IC		AMD Versal™ AI Edge VE2302
Memory		2 x 16GB DDR4 3200 SODIMMs
Storage		1TB M.2 PCIe 2280 SSD
x86 Operating System		Ubuntu 22.04
External I/O	Displays	1x HDMI, 1x DP
	Ethernet	1 x 10/100/1000/2500 Mb Ethernet
	COM	1x RS232/422/485
	Audio	1x Line-Out, 1 x Mic-In
	USB Type A	2x USB3.2 Gen2 Type A, 2x USB2.0 Type A
	USB Type C	1x USB3.2 Gen2 Type C
Security	TPM (FPGA)	Infineon OPTIGA™ TPM SLM 9670 TPM2.0
Expansion Slot	M.2	1x M.2 (Key E 2230) with PCIe x1 and USB2.0 for Wireless/BT
Optional Sensor IO boards	Ethernet I/O	2x 10/100/1000 Mb Ethernet
	GMSL I/O	8x GMSL Cameras
	10/25Gb SFP28 I/O	2x 10/25Gb SFP28
Optional IO	WIFI/BT	Intel® Wi-Fi 6E AX210 (Gig+)
Mechanical	Dimensions (L x W x H)	20.6x19x6 cm (8.1" x 7.5" x 2.35")
	Weight	1.3kg (2.86 lbs.)
Power Adapter		AC Input 100~240V, 50-60Hz DC Output 12.0V, 120.0W
Certifications	Emissions	FCC and CE

Scan QR code for more information:

AMD Embedded+



Product Information



Visit SAPPHIRE



SAPPHIRE